

DIE ARM 移模支臂

MODEL

RC

RD

RE

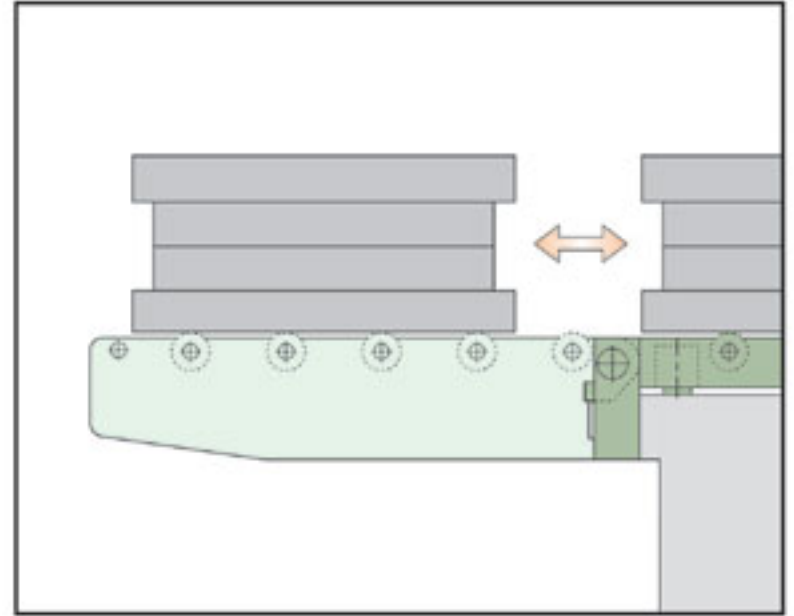
RF

RS

THE CHOICE OF THE MODEL 型式選定

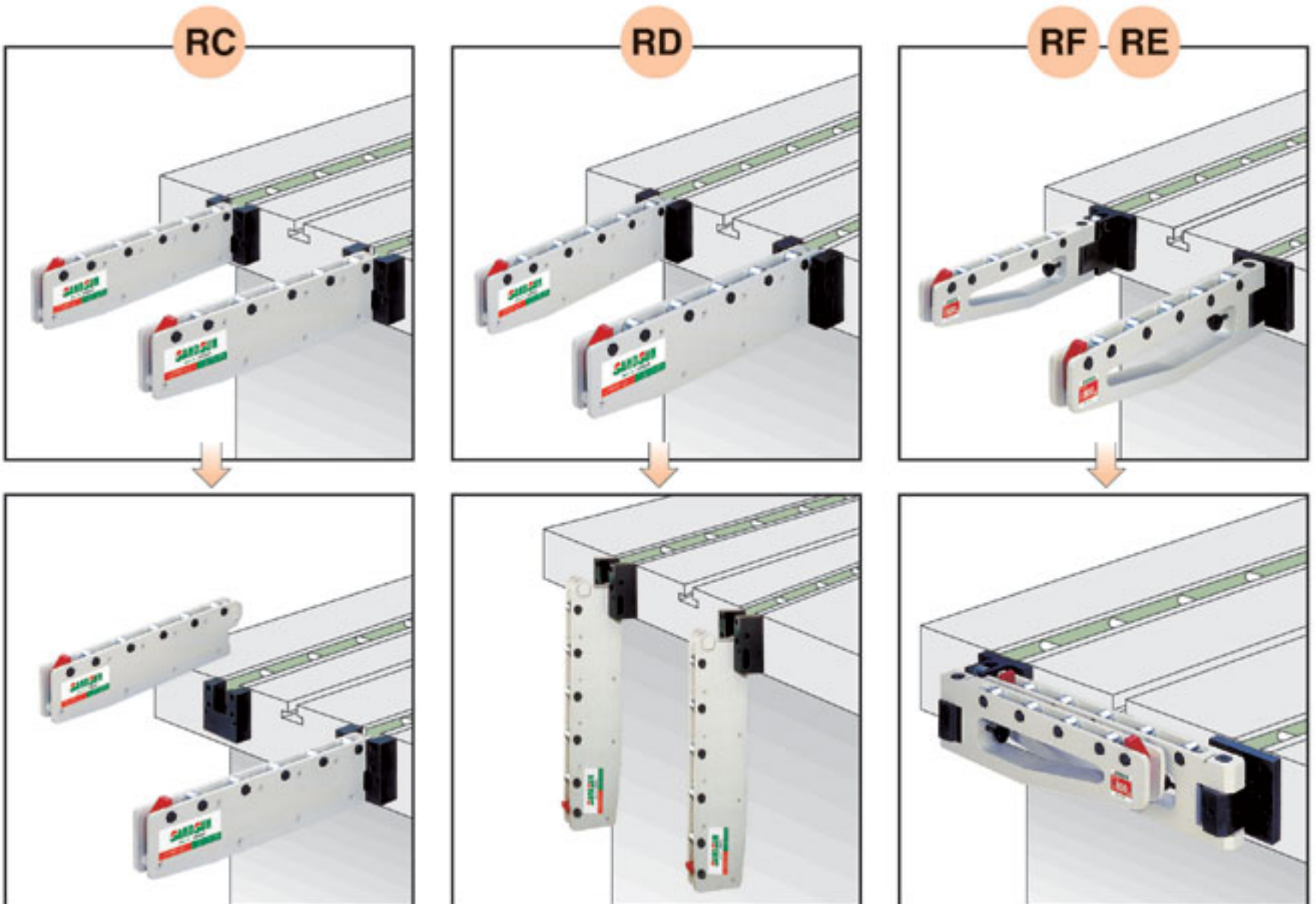
R ① - ②

MODEL 型式	STORAGE METHOD 存放方式	SPECIFICATION 規格
C	DISMANTLING 拆卸式	580
D	HANGING 折下式	760
E	FOLDING (SHORT) 折疊式 (短座)	880
F	FOLDING (LONG) 折疊式 (長座)	990



- The support should be changed into lengthening (S) model when using die arm cooperated with two-stepped die lifter.
(Ex: RC-16 → RC-16S, RC-16H → RC-16HS)

移模支臂配合二段式舉模滑軌使用時，固定座需改用加長(S)型。(例：RC-16 → RC-16S, RC-16H → RC-16HS)



- Any specific model is available based on the needs of the customers.
特殊形式依實際需要另行訂製

DIE ARM 移模支臂

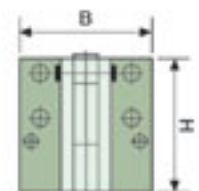
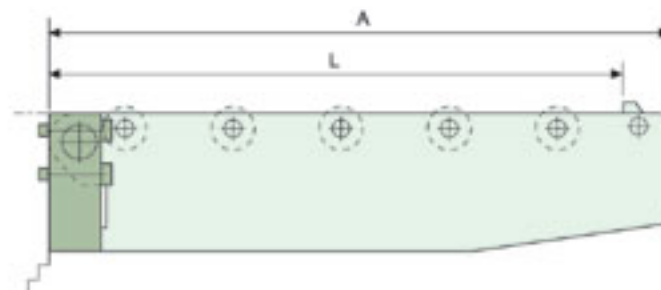
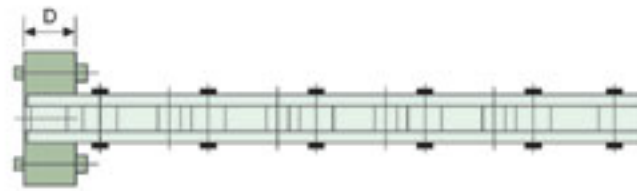


RC



RD

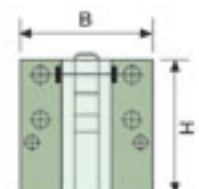
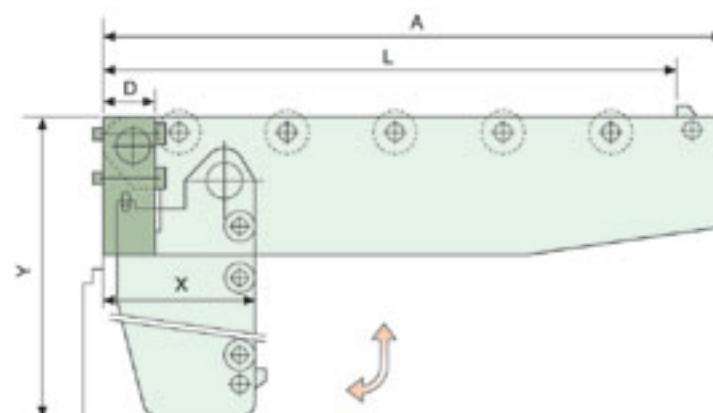
MODEL RC (DISMANTLING / 拆卸式)



- The arm itself and the support in Model RC can be used separately.
RC型支臂本體與固定座可分開個別使用

MODEL 型式	MODEL OF SUPPORT 固定座型式	LENGTH NEEDED OF THE MOLD 模具使用長L(mm)	MAX. CAPACITY 最大荷重W(kgf)	TOTAL LENGTH 總長A(mm)	SIZE OF SUPPORT 固定座尺寸			HOLE PATTERN FOR INSTALLATION 安裝孔尺寸形式	NUMBER OF ROLLER 滾輪個數	
					D	B	H			
RC-580	RC-12	500	800	550	48	115	118	A Type	5	
RC-760		700	600						750	7
RC-880	RC-16	800	800	850			158	B Type	8	
RC-990	RC-20	900	900	950					188	9
RC-05125	RC-16H	500	1250	550	55	130	158	C Type	7	
RC-05160	RC-18H		1600				750			178
RC-05200	RC-20H		2000				750			188
RC-07125	RC-18H	700	1250	750			178		9	
RC-07160	RC-20H		1600				750			188
RC-07200	RC-22H		2000				750			218
RC-08125	RC-20H	800	1250	850			188		10	
RC-08160	RC-22H		1600				850			218
RC-08200	RC-25H		2000				850			248
RC-09160		900	1600	950			248		11	

MODEL RD (HANGING / 折下式)



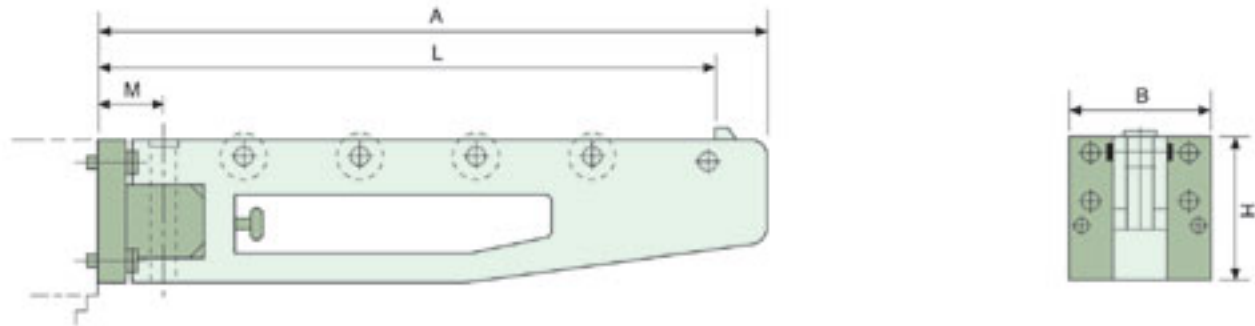
- The hanging length(Y) of Model RD should be less than the height between the plate and the ground.
選用RD型其折下之長度(Y)需小於台盤面距地面之高度

MODEL 型式	LENGTH NEEDED OF THE MOLD 模具使用長L(mm)	MAX. CAPACITY 最大荷重W(kgf)	TOTAL LENGTH 總長A(mm)	SIZE OF HANGING 折下尺寸		SIZE OF SUPPORT 固定座尺寸			HOLE PATTERN FOR INSTALLATION 安裝孔尺寸形式	NUMBER OF ROLLER 滾輪個數
				X	Y	D	B	H		
RD-580	500	800	550	140	620	52	115	118	A Type	5
RD-760	700	600	750		820					7
RD-880	800	800	850	180	960			158	B Type	8
RD-990	900	900	950	220	1100					188

DIE ARM 移模支臂

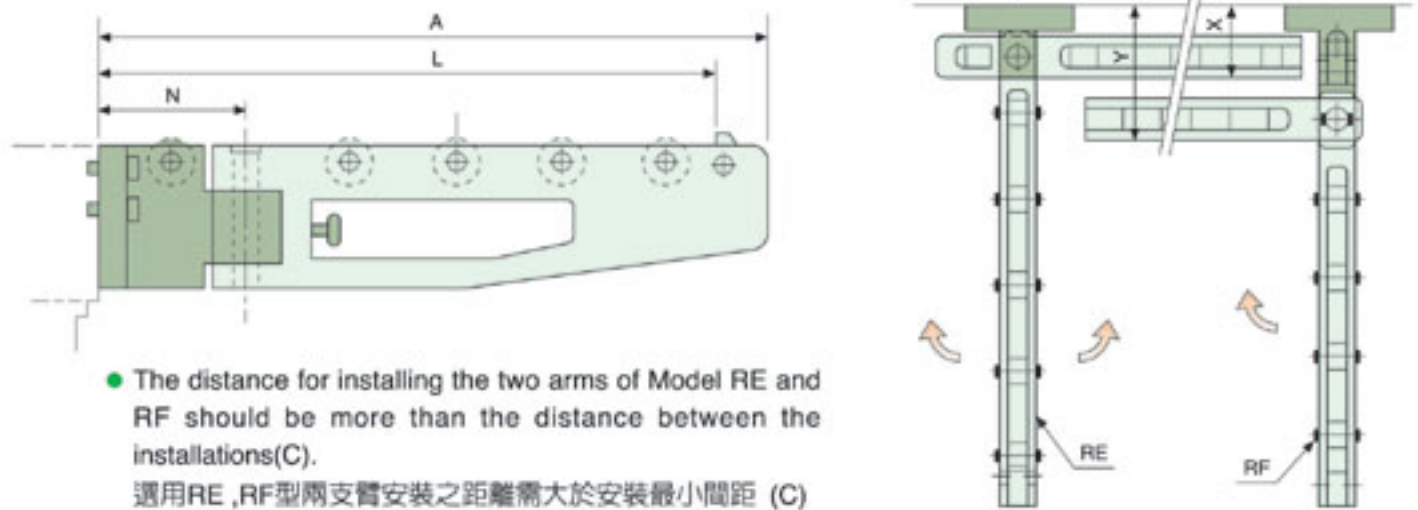


MODEL RE (FOLDING / 折疊式)



- Model RE itself can be turn left or right and stored.
RE型可單獨任意左右旋轉存放使用

MODEL RF (FOLDING / 折疊式)



- The distance for installing the two arms of Model RE and RF should be more than the distance between the installations(C).
選用RE,RF型兩支臂安裝之距離需大於安裝最小間距 (C)

MODEL 型式	LENGTH NEEDED OF THE MOLD 模具使用長L(mm)	MAX. CAPACITY 最大荷重W(kgf)	TOTAL LENGTH 總長A(mm)	MIN. DISTANCE FOR INSTALLATION 安裝最小間距C(mm)	SIZE OF FOLD DOWN 折疊尺寸		SIZE OF SUPPORT 固定座尺寸		NUMBER OF ROLLER 滾輪個數	M	N	HOLE PATTERN FOR INSTALLATION 安裝孔尺寸形式
					X	Y	B	H				
RE, RF-580	500	800	550	525	90	150	115	118	5	57	120	A Type
RE, RF-760	700	600	750	725				158	7			
RE, RF-880	800	800	850	825				188	8			B Type
RE, RF-990	900	900	950	925				188	9			
RE, RF-05160	500	1600	550	525	105	170	130	158	7	74	140	C Type
RE, RF-05200		2000						178				
RE, RF-07160	700	1600	750	725				158	9			
RE, RF-07200		2000						178				
RE, RF-08160	800	1600	850	825				178	10			
RE, RF-08200		2000						188				
RE, RF-09160	900	1600	950	925				218	11			
RE, RF-09200		2000						248				